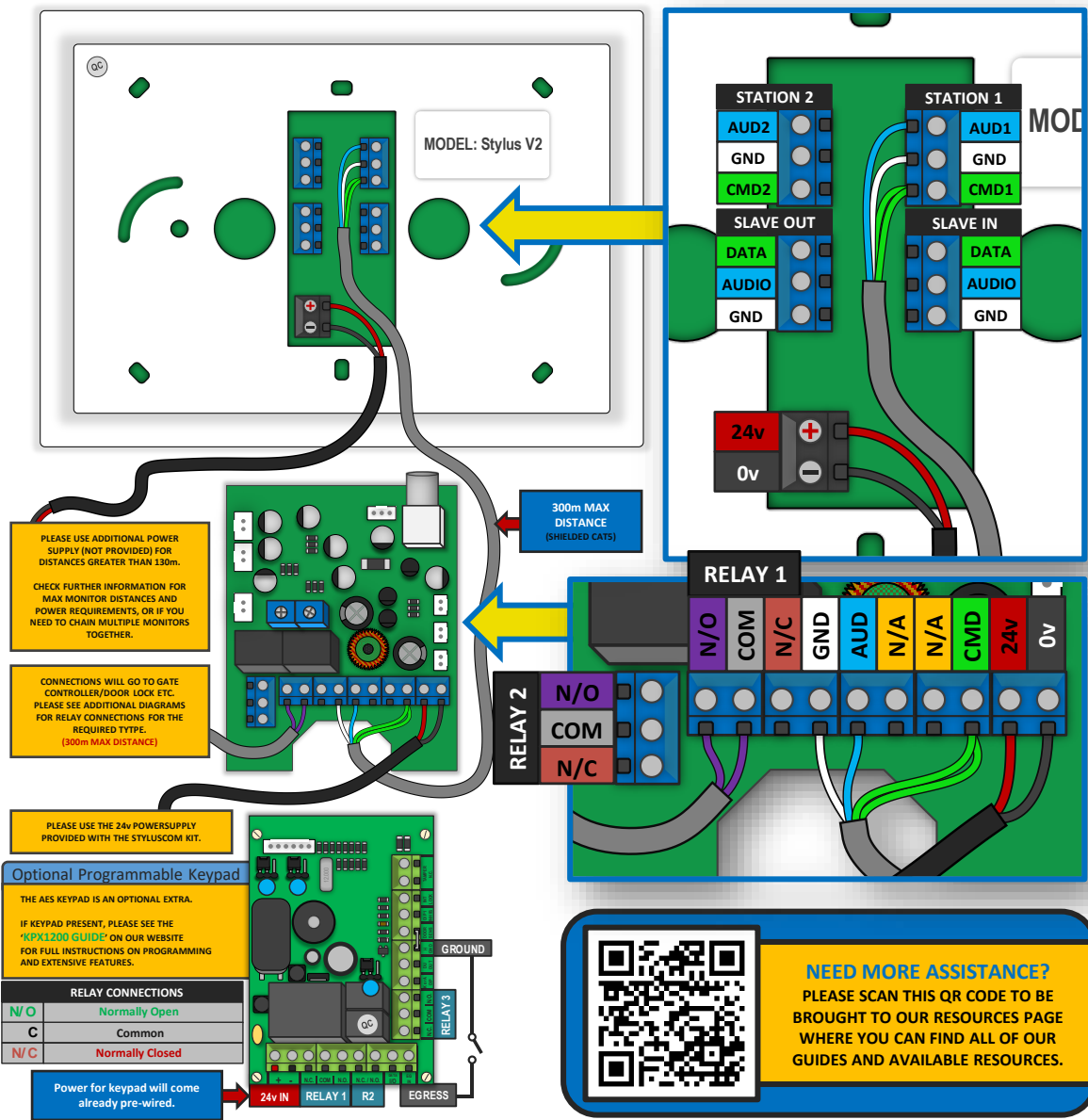


\* ALWAYS FULLY TEST THE UNIT ON SITE BEFORE INSTALLATION TO AVOID RESTOCKING FEES \*

**STILL HAVING TROUBLE?**  
Find all of our support options such as Web Chat, Full Manuals, Customer Helpline and more on our website:  
[WWW.AESGLOBALONLINE.COM](http://WWW.AESGLOBALONLINE.COM)

## STYLUSCOM - WIRING DIAGRAM



## SITE SURVEY

RESTOCKING FEES MAY APPLY IF RETURNED AFTER INSTALL DUE TO SITE ISSUES. PLEASE SEE FULL T&C'S ON OUR WEBSITE

**TIP:** It is recommended that the system be fully tested on site **BEFORE** installation. You must test to ensure that the system is capable of operating on the desired site. Power the system on and place the monitors in their expected locations around the property and then test that everything is working **BEFORE** mounting any items to the walls.

## OPTIMAL RANGE

SHIELDED CABLE IS ALWAYS RECOMMENDED

**TIP:** To get the most range out of the system we would recommend keeping the separate power supply as close as possible to the audio monitor. If chaining multiple monitors together use the SLAVE inputs and outputs - see supplement wiring diagram which will provide more information on the specific requirements and max distances.

## POWER CABLE

KEEP POWER SUPPLY AS CLOSE AS POSSIBLE.

**TIP:** Most technical calls received are due to installers using CAT5 or alarm cable to power the unit.

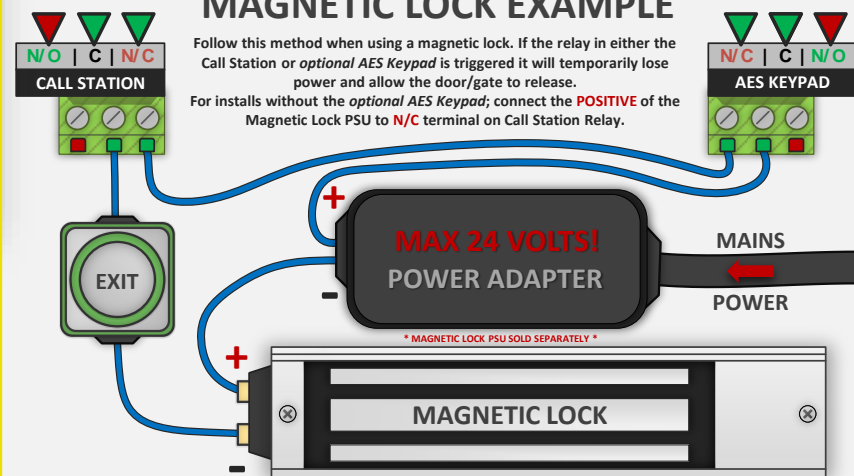
**NEITHER** are rated to carry enough power! ( 1.2amp peak )

Please use the following cable:

- Up to 2 metres ( 6 feet ) – Use minimum 0.5mm<sup>2</sup> ( 18 gauge )
- Up to 4 metres ( 12 feet ) – Use minimum 0.75mm<sup>2</sup> ( 16 gauge )
- Up to 8 metres ( 24 feet ) – Use minimum 1.0mm<sup>2</sup> ( 14 / 16 gauge )

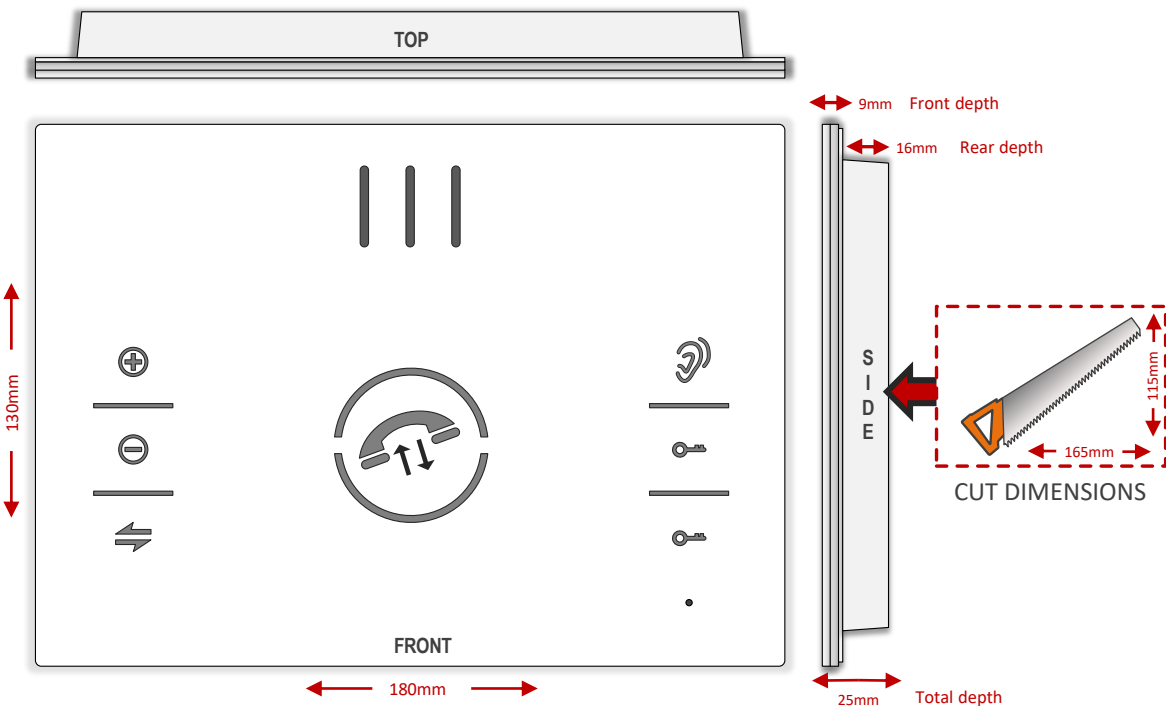
## MAGNETIC LOCK EXAMPLE

Follow this method when using a magnetic lock. If the relay in either the Call Station or optional AES Keypad is triggered it will temporarily lose power and allow the door/gate to release.  
For installs without the optional AES Keypad; connect the **POSITIVE** of the Magnetic Lock PSU to **N/C** terminal on Call Station Relay.

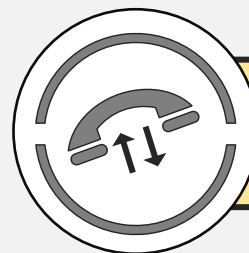


\* ALWAYS FULLY TEST THE UNIT ON SITE BEFORE INSTALLATION TO AVOID RESTOCKING FEES \*

## INFORMATION ABOUT YOUR AUDIO MONITOR



## HOW TO USE THE STYLUSCOM MONITOR



### ANSWER CALL BUTTON

Tap to answer incoming call.  
(tap again to hang up call)



### INCREASE IN CALL VOLUME

Tap to increase volume of monitor.



### DECREASE IN CALL VOLUME

Tap to decrease volume of monitor.



### TRANSFER THE CALL

Tap to transfer the call to other monitor(s).



### MONITORING MODE

Tap to listen to the intercom microphone.



### ACTIVATE RELAY 1

Tap to activate Relay 1.



### ACTIVATE RELAY 2

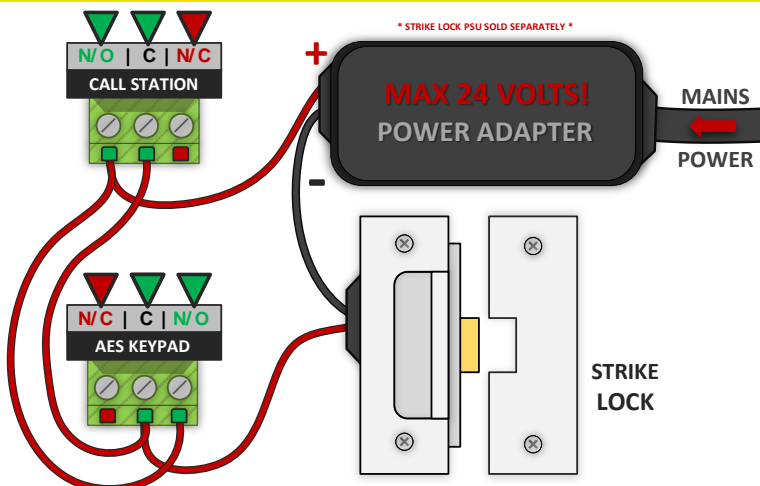
Tap to activate Relay 2.

## AC/DC STRIKE LOCK WIRING EXAMPLE

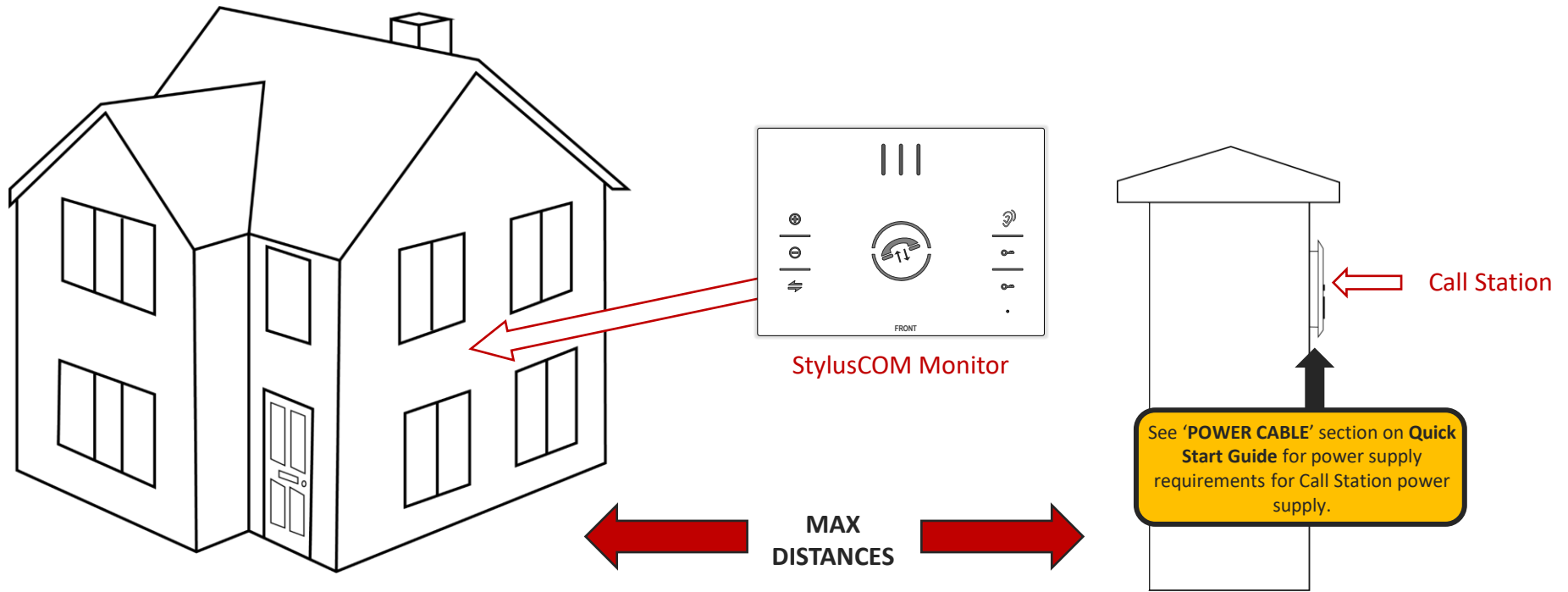
Follow this method when using a Strike Lock with the system. If used it will mean that if a relay in either the Call Station or optional AES Keypad is triggered it will temporarily allow the door/gate to release.

Do you require a custom wiring diagram for your site? Please send all requests to [diagrams@aesglobalonline.com](mailto:diagrams@aesglobalonline.com) and we will do our best to provide you with a supplement diagram suitable for your chosen equipment.

We are constantly using your customer feedback to enhance all of our guides / learning material for installers. If you have any suggestions regarding this please send any suggestions to [feedback@aesglobalonline.com](mailto:feedback@aesglobalonline.com)



# StylusCOM – Power Options

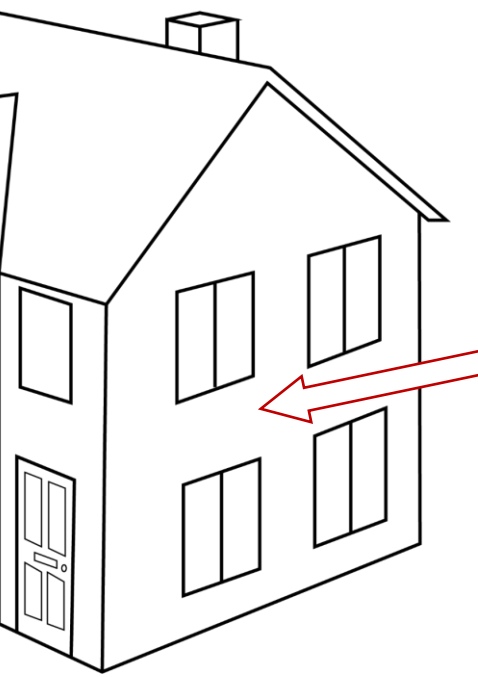


**TIP:**  
To achieve greater distances shown in '2x Dual Power Supply' a separate power supply is required (sold separately).

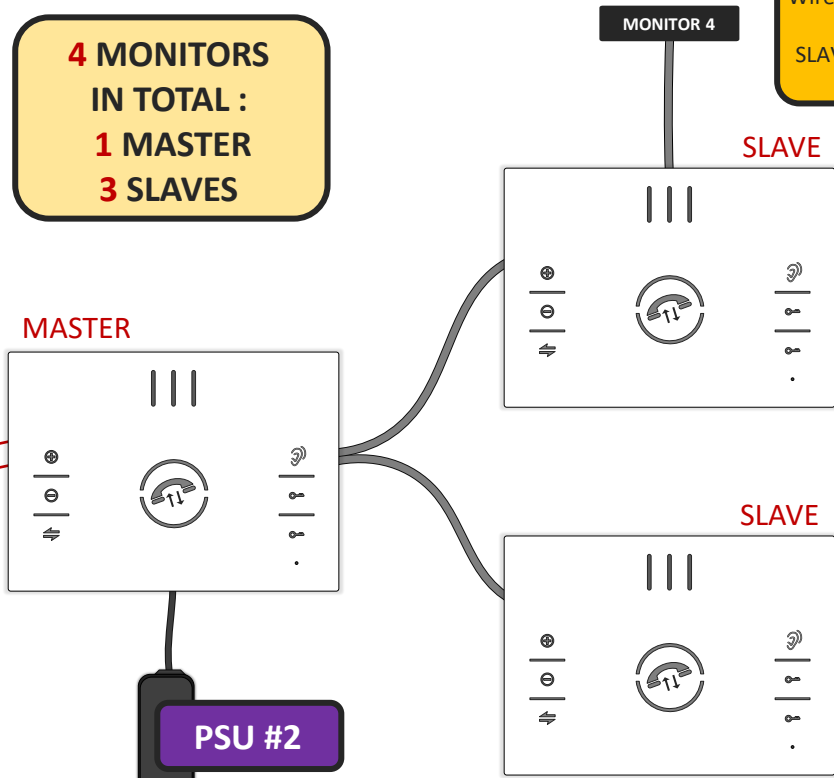
**1x Single Power Supply :**  
CAT5 Cable – 130m  
Poly/Poly Underground – 30m  
Multi pair telephone wire – 30m

**2x Dual Power Supply :**  
CAT5 Cable – 300m  
Poly/Poly Underground – 150m  
Multi pair telephone wire – 50m

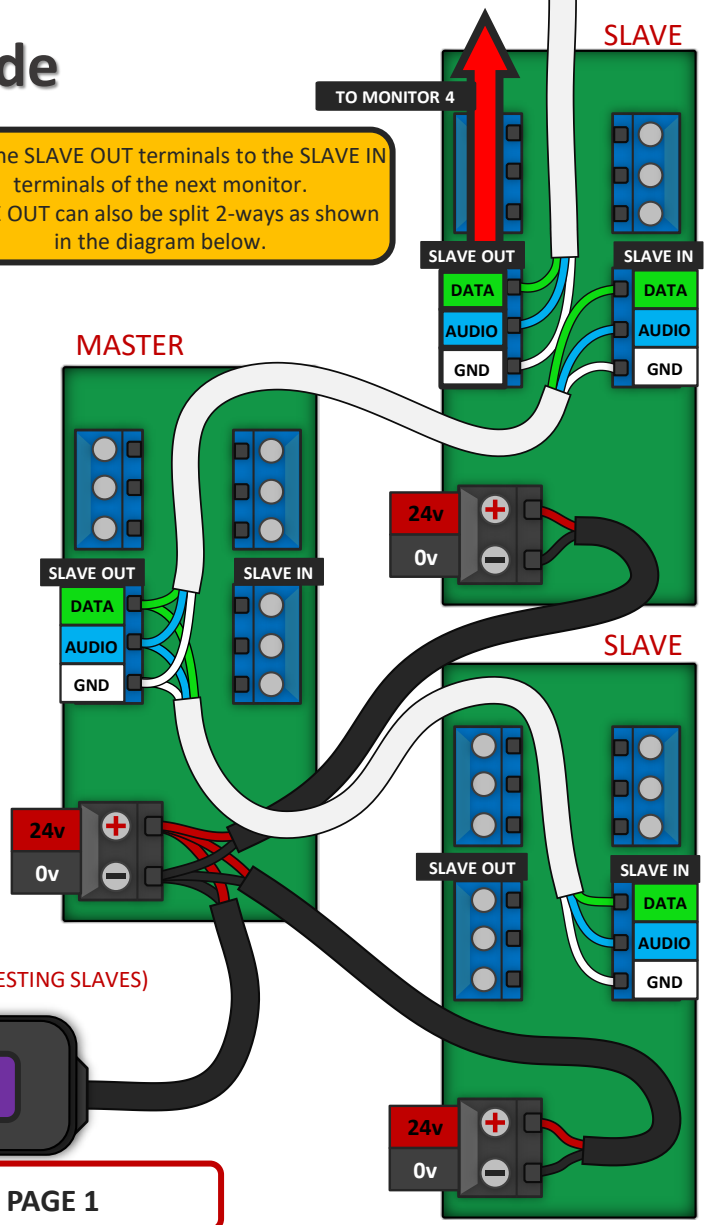
# StylusCOM – Slave Monitor Wiring Guide



**4 MONITORS  
IN TOTAL :  
1 MASTER  
3 SLAVES**



Wire the SLAVE OUT terminals to the SLAVE IN terminals of the next monitor.  
SLAVE OUT can also be split 2-ways as shown in the diagram below.



**Monitor Power Supply Distances:**  
CAT5 Cable – 8m  
1.5mm Cable – 15m  
(MAX DISTANCE BETWEEN MONITORS)

(THE MASTER MONITOR MUST ALREADY BE SET UP BEFORE TESTING SLAVES)  
Second power supply is used to power all of the monitors indoors. Power between monitors will be shared using 1.0mm cable.

**KEEP POWER CABLE BETWEEN MONITORS AS SHORT AS POSSIBLE – SEE POWER CABLE ON PAGE 1**